

TrommALL®

OVERBUILT TO OUTPERFORM



Rock



Top Soil



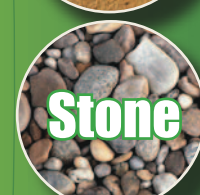
Wood



Gravel



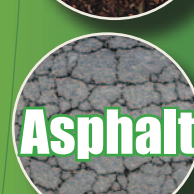
Sand



Stone



Compost



Asphalt



Fertiliser



Waste

Unparalleled compact mobile
trommel and deck screeners that are
“Overbuilt to Outperform”

“We only planned to hire the TrommALL MS2500, but we were so impressed that we bought it”
Gavin Cleary - Cleary Compost



Scan to see this machine working.

The All NEW TrommALL® MS2500

About

Introducing the all new **TrommALL® MS2500** range. A small yet tough deck screen system which complements our existing trommel range. This machine is available in several models including our popular static version, pictured above, or the more independent wheeled version pictured below. Should you have requirements for an electrical version then talk to us today.

When on site, the MS2500 is easily manoeuvred using the **TrommALL® “Lift Assist”**. This system works with all models in this range and makes this machine ideal for the smallest of work yards. To find out more contact us now.

Regardless of the version of the machine, we offer a wide range of mesh size from 100mm down to piano wire for a finer end product. All MS2500 machines come with 6ft x 6ft screen box and stand 10ft tall while in operation. These machines are designed and manufactured at our facility here in Ireland using only the recognised brand named parts. This ensures that you will always be able to secure any required spares needed, even in the most remote corners of the world.

All **TrommALL®** machines are constructed from laser cut steel to ensure precision, accuracy, strength, durability and extended machine life time, while working in the toughest environments. This is just a part of what goes into making all our **TrommALL®** range “Overbuilt to Outperform”.

Features

- Operational length: 2.95M
- Operational width: 2M
- Operational height: 2.9M
- Weight: 2.5* tonne (Different models may vary)
- Yanmar 10hp engine
- From transport position to fully operational in under 4 minutes



In Action



Unit 25 Bay Road Business Park, Mountmellick, Co. Laois, Ireland.

www.TrommALL.com • T +353 (0) 57 8679034 •

Sales@trommall.com • Facebook / Twitter / Youtube

“I’m in the machinery business for thirty years, I know what to look for and I would recommend this TrommALL to any of our customers.
Seamus Sheelan, Connecticut, USA”



Scan to see this machine working.



The Original TrommALL® 5100

About

Our **TrommALL® 5100** series is the original, this machine was first designed in 2012 and came to market 1 year later and proved a huge success for the company. This small but extremely versatile trommel became the blue print for our growing company, it is this machine that inspired us to coin the phrase **“Overbuilt to Outperform”**.

Since our original machine we have continued to only use recognised brand name component parts in our machines. We make a point of ensuring that every aspect of the build, is built to last, from the gusseted chassis to the 2 pack undercoated anti corrosion paint.

The **TrommALL® 5100** series, like its smaller brother the MS2500 is available in a variety of models. This size machine is most popular as the wheeled version pictured above, however it also comes as a tracked machine with or without side conveyors.

We have used this machine to screen everything from shredded carpet to quarry rock. It comes with the mesh of your choice from 120mm punch plate down to 6mm mesh.



Features

- Extended Length 11.8M
- Height of hopper 3.08M
- Drum size 1.5M x 2.7M
- Tier 4 engine Diesel / Hydraulic Powerunit
- Safety guarded to CE specifications
- Full length impact bed in feeder
- Impact bed in tail conveyor
- Hydraulically movable feeder conveyor
- Quick drum change
- Remote greasing
- 4 Wheel Drive Drum
- Ground level adjustable brushes
- Easily transported
- End tensioned screens
- Heavy duty drum shafts with taperlocks
- Cast iron pumps and motors
- Hydraulic oil cooler
- Variable speed belts
- Roll out product conveyor for maintenance

In Action



Gravel



Top Soil



C&D



Compost

“It was the build quality of the TrommALL that made the decision for me.”

Brian Place, Owner & Director,
1st Place Grab & Skip Hire, London



Scan to see this machine working.



The TrommALL® 5800

About

The 5800 series, the big brother of the TrommALL® family. This machine is very much based on the 5100 series, just bigger, better and longer. This machine came about due to a series of client requests, which we were more than happy to address.

While the wheeled version is the preferred model on the 5100, clients seem to choose this model as a tracked machine. Like the 5100 this machine comes as standard with a tier 4 engine and a choice of conveyors and mesh sizes.



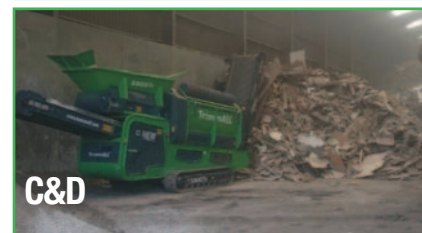
Features

- Extended Length 12.78M
- Height of hopper 3.21M
- Drum size 1.5m X 3.7m
- Diesel / Hydraulic Powerunit
- Safety guarded to CE specifications
- Full length impact bed in feeder
- Impact bed in tail conveyor
- Hydraulically movable feeder conveyor
- Quick drum change
- Remote greasing
- 4 Wheel Drive Drum
- Ground level adjustable brushes
- Easily transported
- End tensioned screens
- Heavy duty drum shafts with taperlocks
- Cast iron pumps and motors
- Hydraulic oil cooler
- Variable speed belts
- Roll out product conveyor for maintenance

In Action



Skip waste

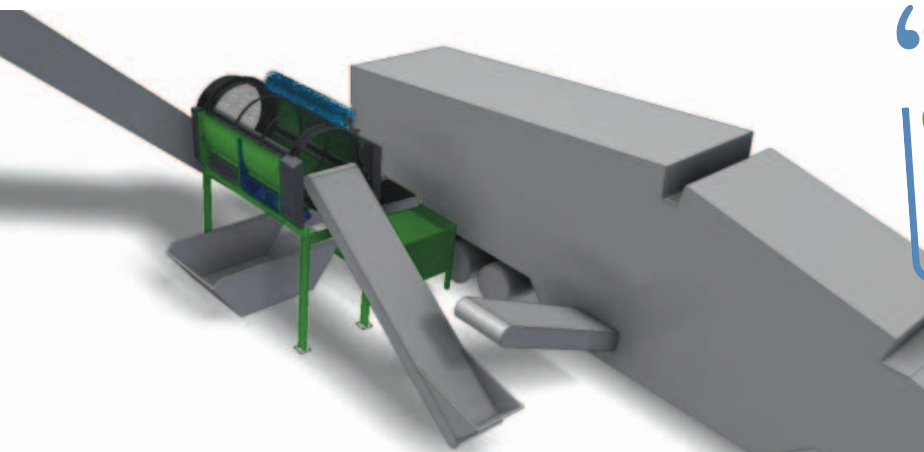


C&D



General Waste





“ I went with TrommALL® as it was easy to see their vast experience and knowledge. What we have now is fantastic. ”

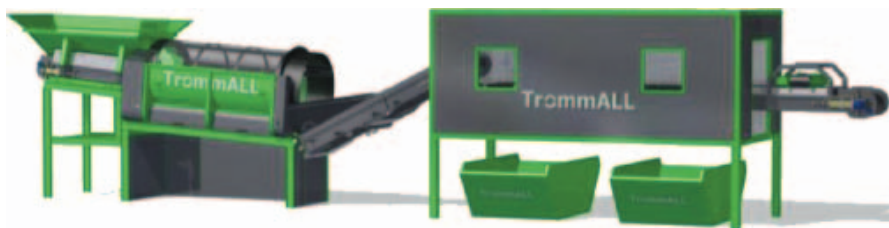
Robbie Walker - Walkers Waste



About

At TrommALL®, one of our greatest strengths is our ability to address our customers needs. On several occasions we have provided bespoke solutions to match specific client requirements. From time to time this includes adapting our range to work as a static unit.

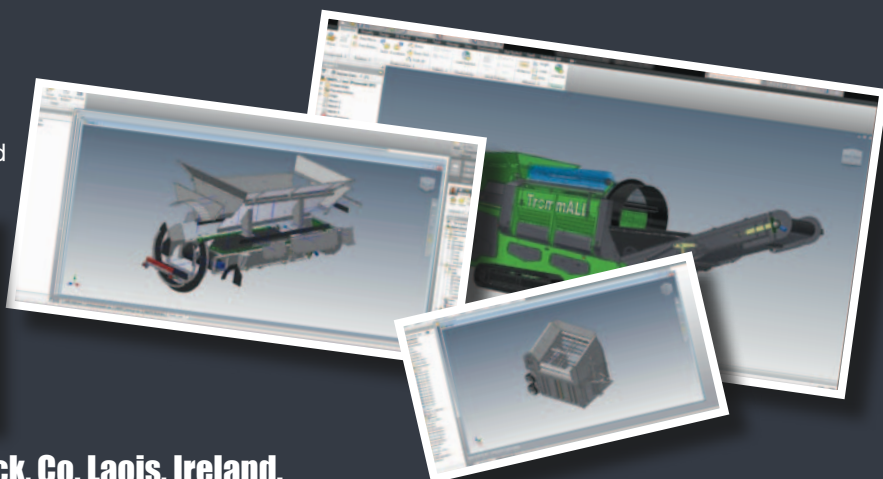
For more information on a static units contact us today.



TrommALL® Static TECHNICAL SPECIFICATION

Model	Height (O)	Length (O)	Width (O)	Height (T)	Length (T)	Width (T)	Weight	Engine	Screen / Mesh
MS 2500 W	2.9	4.4	2.146	2.428	4.4	2.14	2.5T	Diesel 10hp	1.82 x 1.82
MS 2500 ST	2.9	3.7	2.146	2.35	3.7	2.14	2.5T	Diesel 10hp	1.82 x 1.82
MS 2500 STE	2.9	2.7	2.146	2.35	2.7	2.14	1.95	-	1.82 x 1.82
5100W	3.08	11.79	2.15	3.2	8.9	2.5	9.65	Diesel 77hp	1.5 x 2.7
5100W*	3.08	11.79	2.15	3.2	8.9	2.5	9.65	Diesel 77hp	1.5 x 2.7
5100WT	3.08	11.79	2.15	3.2	8.9	2.5	8.45	-	1.5 x 2.7
5100WT*	3.08	11.79	2.15	3.2	8.9	2.5	8.45	-	1.5 x 2.7
5100TR	3.08	11.79	2.5	3.1	8.9	2.5	10.75	Diesel 77hp	1.5 x 2.7
5100ST	-	-	-	-	-	-	-	-	-
5800W	3.21	12.78	2.15	3.2	10	2.5	11.75	Diesel 77hp	1.5 x 3.7
5800W*	3.21	12.78	2.15	3.2	10	2.5	11.75	Diesel 77hp	1.5 x 3.7
5800TR	3.21	12.78	2.5	3.15	10	2.5	12.25	Diesel 77hp	1.5 x 3.7
5800ST	-	-	-	-	-	-	-	-	-

Models marked * include optional extra of a side conveyor.
 Models marked W = TrommALL Wheel version
 Models marked TR = TrommALL Tracked Version
 Models marked ST = TrommALL Static Version
 Models marked E = TrommALL Electric Version
 All all dimensions are in meters unless otherwise specified
 Dimensions marked "O" = operational, T = Transport



Unit 25 Bay Road Business Park, Mountmellick, Co. Laois, Ireland.

www.TrommALL.com • T +353 (0) 57 8679034 •

Sales@trommall.com • Facebook / Twitter / Youtube

“ I loved their machines, but it was after visiting their manufacturing facility, that I knew I could work with them
Martin Donnelley - Australian Dealer ”



TrommALL® Manufacturing Facility

About

TrommALL® head office is ideal located in the centre of Ireland and just off the major road network connecting Northern Ireland, Dublin, Cork, Limerick & Galway. We are 1hr 30min from both Dublin and Shannon airports and only 2hrs to the port of Rosslare Harbour, making us the perfect location should you ever wish to visit us.

Our 10,000sq foot building, is run over 3 stories and sits on a multi acre site, all of which gives us ample room, not only for manufacturing, but for growth in the years to come. We already have in place a dedicated design, fabrication, painting & assembly production train. Not to mention our large, state of the art service and parts department ensuring a top quality back up service.

In Action



Design



Manufacturing



Finishing



Assembly

